

MAVIC Deemax 27,5

2021
REAR

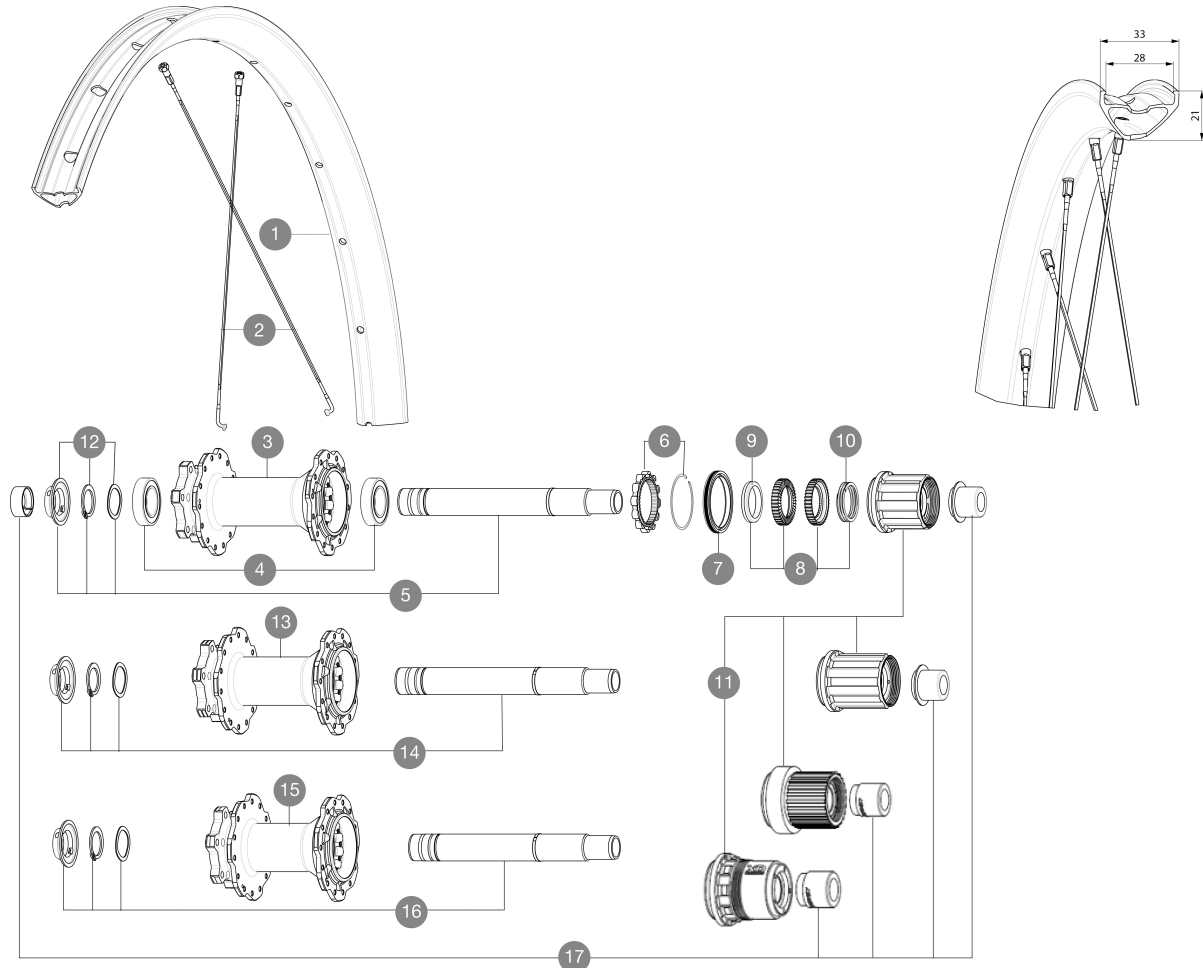
ASTM CATEGORY 5 : GRAVITY RIDING FOCUSED ON THE DESCENT

For a longer longevity of the wheel, Mavic recommends that the total weight supported by the wheels doesn't exceed 150kg, bike included

Recommended tyre sizes: 60mm to 76mm (2.35" to 3.0")

REFERENCES WHEELS

R39661	Deemax 27,5 21 Rr Bst	R39691	Deemax 27,5 21 Rr 12x157 7S
R39671	Deemax 27,5 21 Rr Boost XD	R39711	Deemax 27,5 21 Rr Boost MS
R39681	Deemax 27,5 21 Rr 12x157	R39721	Deemax 27,5 21 Rr 12x157 XD



RIMS



&NBSP::

1	V3766315 V2640101	Kit Front/Rear rim Deemax 21 27,5" UST RIM TAPE 32mm for 28 to 29mm wide rims
---	----------------------	--

SPOKES

2	V2388001	KIT 14 J BENT STEEL SPOKES 280mm DEEMAX DH 20 27,5" + black
---	----------	---

HUB SHELLS

3	N/A	HUB BODY
4	M40076	HUB BEARINGS 17x30x7 6903 x 2
5	V2374901	Kit ID360 150/157 D6T 7S 2AXLE WITH CIRCLIP
6	V2252701	KIT ID360 INSERT SHAPED EAR LOBE > 2017
7	V2251601	KIT ID360 SEAL + GREASE
8	V2375201	KIT ID360 24 TEETH 2 RATCHET + MTB SPRING + PAD (specific)
9	V2375401	KIT ID360 MTB 24T 3 NOISE REDUCING PADS
10	V2372901	KIT 3 ID360 MTB SPRINGS
11	V3780101	HG9 Alloy MTB Freewheel Body ID360
11	V3740101	XD MTB Freewheel Body ID360
11	V3990101	MicroSpline MTB Freewheel Body ID360
11	V2375001	Freehub Body ID360 7S Alu
12	V2373001	KIT ADJUST. SYSTEM QRM AUTO ID360 for 17x30x7 bearing

13	N/A	HUB BODY
14	V2374801	Kit ID360 150/157 D6T AXLE WITH CIRCLIP
15	N/A	HUB BODY
16	V2372201	KIT ID360 148 D6T AXLE WITH CLIP
17	V2510701	ID360V2RrAxleAdapt12x142/148

OPTIONS

V2372801	KIT ID360 2x40 TEETH RATCHETS + MTB SPRING + GREASE + PAD
----------	---

MAVIC Deemax 27,5

DELIVERED WITH

UST valve and accessories (129 838 01)	
Pre-installed tubeless rim tape	
Multifonction adjustment wrench (delivered with rear wheel) (325 423 01)	
2 replacement spokes with each wheel	

COMPATIBILITY

Front axle: 15x110 Boost, convertible to 20x110 Boost thru axle with adapters	
DH spacing axles: 12X150 , 12x157 , 12X157-7speed	
Freewheel: Shimano HG9, XD or Micro Spline	
Boost Axles : 15X110 ; 12X148	

Specifications

RIMS

- **Material** : Mactal
 - **Material** : S6000 Aluminum
 - **Drilling** : traditional
 - **Internal width** : 28 mm
 - **ETRTO size 27.5"** : 584x28TC
 - **ETRTO size 29"** : 622x28TC
- Black Shield treatment (protects your rim against impacts and scratches)
Asymmetrical rim design
UST Tubeless Ready
SJP

SPOKES

- **Material** : steel
- **Nipples** : steel, ABS
- **Count** : 28 front and rear
- **Lacing** : front and rear crossed 3

WHEEL HUB

- Hub available with 6-bolt brake rotors
- **Axles** : Front 15X110 Boost ; Rear 12X148 Boost
 - **DH spacing axles** : 12X150 , 12x157 , 12X157-7speed available
- Instant Drive 360
QRM Auto

VERSIONS

- **Disc standard** : 6 Bolts only
- **Freewheel** : SRAM XD, Shimano HG9, Shimano Micro-Spline
- **Diameter** : 27,5" and 29"
- **Hub width** : Boost (front 15/20x110, rear 148) or Non-Boost (front 15/20x100, rear 135/142) or DH rear (150/157) or DH7S rear (150/157-7S)

WHEEL WEIGHTS

1055